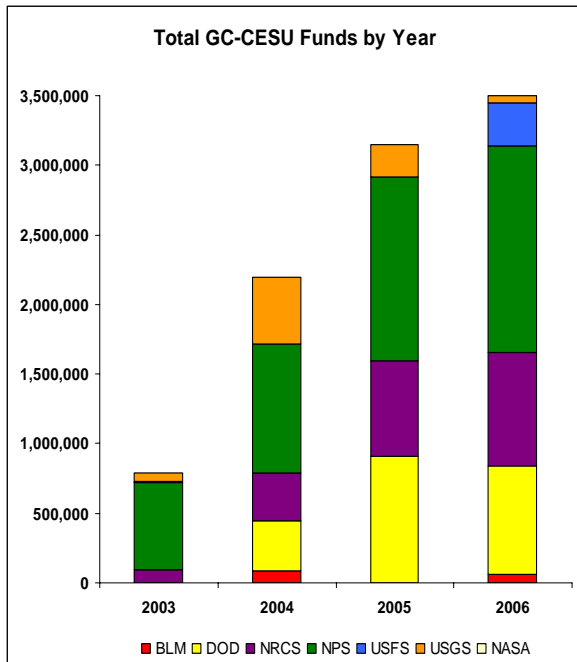




GC-CESU Assessment

The five-year Gulf Coast-Cooperative Ecosystems Studies Unit (GC-CESU) self-assessment is complete. The self-assessment, along with signature pages from all partners, has been forwarded to the national CESU office. A copy of the self-assessment will be e-mailed to the partners when the final agreement is received.



On behalf of the GC-CESU, thank you for your cooperation in compiling the required information for the self-assessment.

Since its inception in August 2002, the GC-CESU initiated 148 projects with seven

participating federal agencies. The projects were 50% research, 35% technical assistance, and 15% educational. During the first full year (FY 2003), the GC-CESU established 19 projects with four participating federal agencies. In that first year, 13 projects with the National Park Service accounted for 80% of the total project funding. By FY 2006, three additional federal agencies were included, total annual project numbers more than doubled, and total annual program funding increased more than four-fold. By the close of FY 2006, total cumulative funding for projects was in excess of \$9.6 million. While participation from the National Park Service remains strong, and has steadily increased, participation by other federal agencies has grown such that it now represents almost 60% of the total program funding for FY 2006.

Howdy

We would like to welcome our new GC-CESU University and NGO partners! Listed below are the names for the new partners.

- Houston Advanced Research Center (HARC)**
- Sul Ross University**
- Tarleton State University**
- The University of West Florida**
- University of Arkansas at Monticello**
- University of Arkansas Division of Agriculture**

Also, it is always a pleasure to welcome a new federal partner.

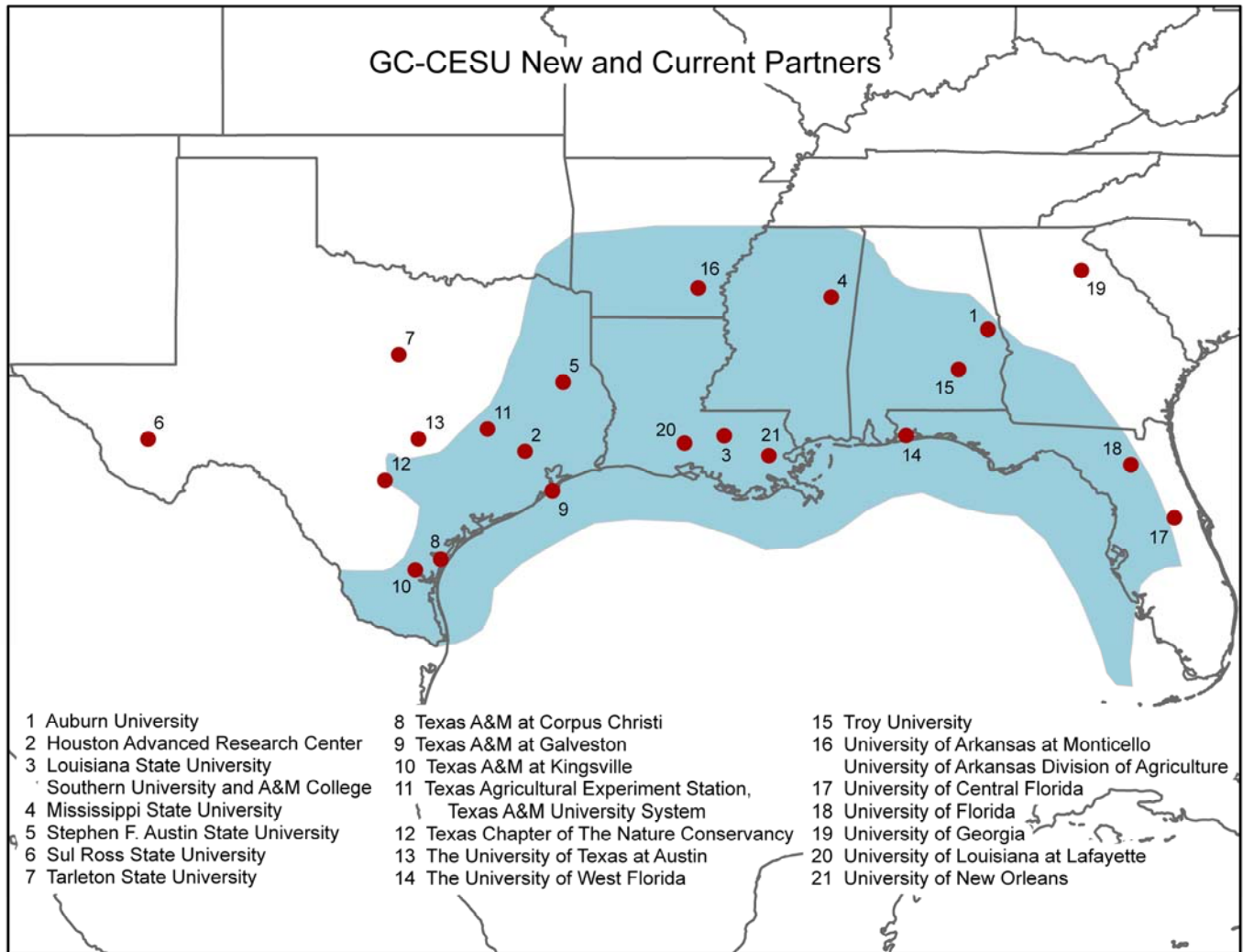
Department of Army, Corps of Engineers

Who will be joining our other federal partners:

- Bureau of Land Management
- Department of Defense
- National Aeronautics & Space Administration
- National Park Service
- Natural Resource Conservation Service
- U.S. Forest Service
- U.S. Geological Survey-Biological Resources Division

The following units will not be rejoining the GC-CESU as it moves into the next 5 years:

- Grambling State University
- Instituto de Ecologia, A. C., Mexico
- Rice University
- Coastal Conservation Association



New Associate Director Joins Texas A&M IRNR

Dr. Bob Shaw has been named associate director of the Texas A&M Institute of Renewable Natural Resources, effective May 1, 2007. Shaw's major research focuses on restoration of disturbed ecosystems, emphasizing the use of fire as a management tool. In addition, his work on the impacts of military vehicles and training on native vegetation is the basis for programs on defense lands nationwide. Dr. Shaw expertise also includes biodiversity and natural resource conservation, grass taxonomy, and multiple-use management of public and private lands.

During his 25-year tenure at Colorado State University, Shaw founded and directed the Center for Environmental Management of Military Lands – the largest research and service organization within the CSU system. In 2006, the center secured \$18 million in contracts and employed over 400. Since its inception, the center has obtained more than \$200 million in contracts

Shaw has a bachelor's from Southwest Texas State University (now Texas State University – San Marcos). He earned a master's degree in 1976 and a doctorate in 1979, both in range science at Texas A&M University. Prior to joining the faculty at Colorado State, he taught in the School of Forest Resources and Conservation at the University of Florida from 1980-82.

Among his duties at the Texas A&M Institute of Renewable Natural Resources, he is responsible for the host university administration of the GC-CESU.

(http://agnews.tamu.edu/dailynews/stories/A_GPR/Apr1907a.htm)

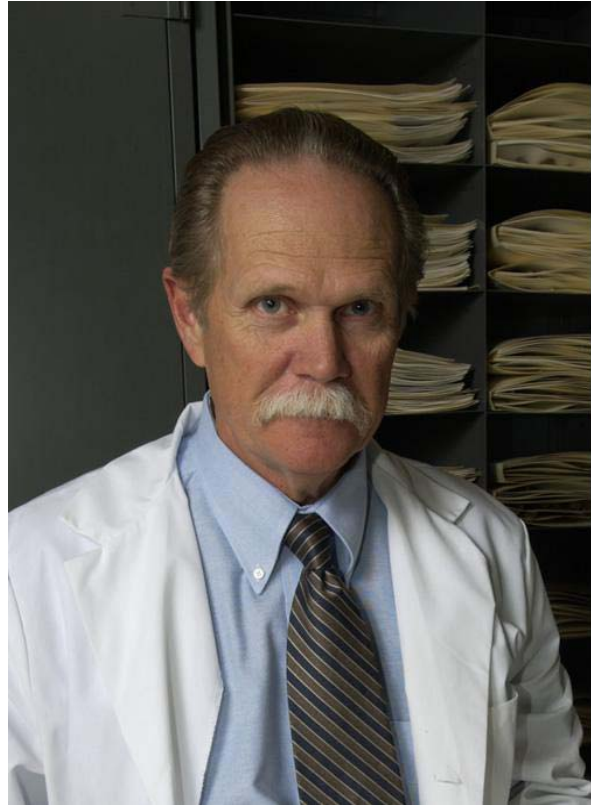


Photo by Bill Cotton

2007 GC-CESU Annual Meeting

The GC-CESU annual meeting is schedule for October 9-11, 2007, at the Imperial Palace (IP) Casino Resort, 850 Bayview Avenue, Biloxi, Mississippi, 1-888-946-2847 or 228-432-3216 (www.ipbiloxi.com). A block of queen size, non-smoking rooms are reserved at the IP for \$94.00 per night. To receive this rate, please make your reservations before September 18, 2007, using group code "S O 7 6 9 2". Check in time at the IP is 4:00 p.m.

The primary focus of the meeting will be to review progress of the CESU, discuss opportunities for stronger programs with federal agencies, and collaboration among partners.

All partners are encouraged to give a short 10-minute PowerPoint presentation

highlighting the results and outcomes of their institution's major GC-CESU projects.

We hope that you will make every effort to attend.

Tentative Agenda is:

Tuesday, October 9, 2007

IP Casino Resort

4:00 p.m.—Registration/Check-in

6:30 p.m.—Evening Social, Poolside – IP
Casino Resort
*(Casual attire. Light hors
d'oeuvres will be served)*

Wednesday, October 10, 2007

Royal Hall C - IP Casino Resort

7:30 a.m.—Continental Breakfast

8:30 a.m.—Overview/Introductions – Dr.
Bob Shaw
(Casual attire for field trip)

8:45 a.m.—GC-CESU project updates

10:05 a.m.—Break

10:20 a.m.—Federal Perspectives

11:30 a.m.—Depart for Field Tour

Gulf Shrimp Boil Lunch
Gulf Islands National Seashore
– Wetlands Walk
Biloxi Shrimping Tour

5:00 p.m.—Return

7:00 p.m.—Dinner – Thirty-Two Steak and
Seafood, 32nd Floor IP Casino Resort

Thursday, October 11, 2007

Royal Hall C - IP Casino Resort

7:30 a.m.—Continental Breakfast

8:30 a.m.—GC-CESU Business Meeting –
Dr. Bob Shaw
(Business casual)

11:30 a.m.—Wrap up and adjourn

BUSINESS MEETING

Topics for the annual Business Meeting will include a new Strategic Plan and formalization of the GC-CESU Executive Committee.

GC-CESU Strategic Plan

Prior to the annual meeting, all partners will receive a draft strategic plan for the GC-CESU. The strategic plan will then be discussed during the business meeting to reach consensus on its content and structure. A second draft of the plan, incorporating changes made at the meeting, will be prepared and forwarded to the partners for review.

GC-CESU Executive Committee

Two GC-CESU partners are needed to serve on the Executive Committee. Jim Sweeny, University of Georgia and Nancy Peterson, University of Florida volunteered to serve. However, GC-CESU partners will have the opportunity to elect their two representatives at the business meeting. All members serve a three-year term, except for the host university representative, Dr. Bob Shaw and the National NPS Liaison, Mr. John Yancy, who are permanent members. In addition, a Federal member representative will be designated to serve on the committee during the meeting.

SEE YOU IN BILOXI!!!